

LAFAYETTE

MARCHING BAND

WARM-UP PACKET



ALTO SAX

E♭ Alto Saxophone Fingering Chart

A♯	B♭	B	C	C♯	D♭	D	D♯	E♭	E

F	F♯	G♭	G	G♯	A♭	A	A♯	B♭

B	C	C♯	D♭	D	D♯	E♭	E	F

F♯	G♭	G	G♯	A♭	A	A♯	B♭	B

C	C♯	D♭	D	D♯	E♭	E	F

(Notes on gray background are suggested altissimo fingerings.)

F♯	G♭	G	G♯	A♭	A	A♯	B♭	B

(When more than one fingering is shown, the first is the most common.)

Alto Sax
Bari Sax

Cichowicz Flow Studies

1

2

3

4

5

6

7

8

9

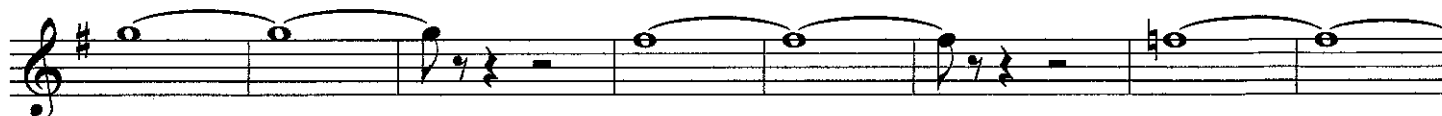
Alto Sax

Lafayette Warm-Ups

Concert F-9 Count Long Tones



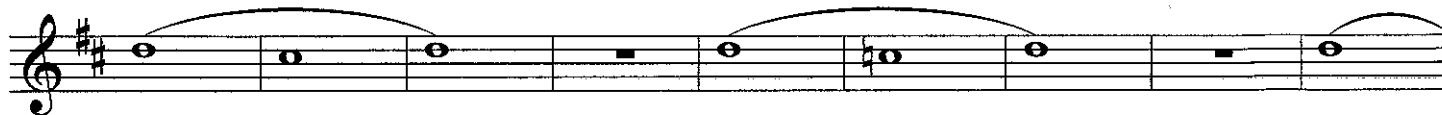
Concert B-flat-9 Count Long Tones



#1 Old #1



F Remington (whole note)



10

19

#2 Old #2

8

#6 #6

9

15

20

25

29

38

#8 #8

Goldman Articulation

6

11

16

21

Level 3 Slurs

8

11

16

repeat in reverse

#9
Old #9

#19
#19

8

STYLE / LENGTH	ARTICULATION VISUALIZATION NOTE SYMBOL	VISUALIZATION
Connected (Legato)		
def. - There is no decay and the notes touch	Long Lifted (Legato Accented)	
def. - There is a slight decay and the notes touch	Lifted	
def. - There is a slight decay and a small space	Detached (Staccato)	
def. - There is no decay and the note length is 1/2 the note it is attached to	Accented	
def. - beginning of the note is slightly louder, slight decay and the notes touch	Lifted Accent	
def. - beginning of the note is slightly louder, slight decay and a small space	Roof-Top Accent	
def. - beginning of the note is slightly louder, no decay and length is 1/2 the note it is attached to		

Alto Sax

Articulation Exercises

①



②



③



④



27



Tonguing Exercises

Alto Sax

①



②



③



④



⑤



⑥



⑦



⑧



Alto Sax

Lip Slurs/Chromatic Scales

Version A

1 3 5 7 9 11 13 15 17 19 21

Version B

The image displays a musical score for two alto saxophones, titled "Lip Slurs/Chromatic Scales" and "Version B". The score is organized into 11 numbered measures, each containing a chromatic scale with a slur over it. The scales are written on a single treble clef staff. Measure 1 starts on G4 and descends chromatically to G3. Measure 2 starts on F#4 and descends to F#3. Measure 3 starts on F4 and descends to F3. Measure 4 starts on E4 and descends to E3. Measure 5 starts on D4 and descends to D3. Measure 6 starts on C#4 and descends to C#3. Measure 7 starts on C4 and descends to C3. Measure 8 starts on B4 and descends to B3. Measure 9 starts on Bb4 and descends to Bb3. Measure 10 starts on Ab4 and descends to Ab3. Measure 11 starts on G4 and descends to G3, ending with a whole note G3. The key signature for measures 1-4 is one sharp (F#), for measures 5-8 is one flat (Bb), and for measures 9-11 is two flats (Bb, Eb).

Alto Sax

I Rec.



Alto Saxophone

2013 Lafayette Marching Band Warm-Ups

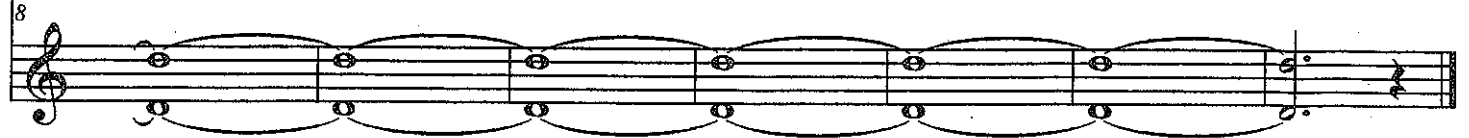
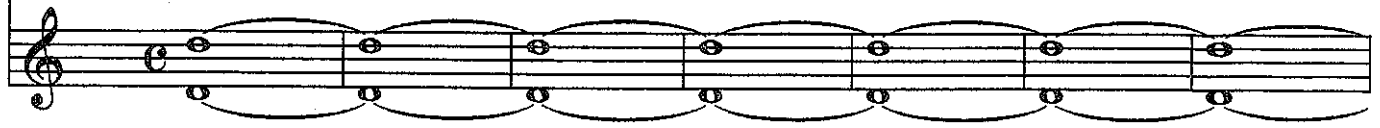
1



2



3



Alto Sax.

6

7

11

14

17

7

6

Alto Sax.

8

Musical staff 8, first line. Treble clef, common time signature. The staff contains a melodic line starting with a quarter note, followed by eighth notes, and ending with a quarter note. A dynamic marking *p* is placed below the first few notes.

Musical staff 8, second line. Treble clef, common time signature. The staff contains a melodic line starting with a quarter note, followed by eighth notes, and ending with a quarter note. A dynamic marking *f* is placed below the first few notes. A bracket above the staff indicates a triplet of three eighth notes.

9

Musical staff 9, first line. Treble clef, key signature of two sharps (F# and C#), common time signature. The staff contains a melodic line starting with a quarter note, followed by eighth notes, and ending with a quarter note. A dynamic marking *p* is placed below the first few notes.

Musical staff 9, second line. Treble clef, key signature of two sharps (F# and C#), common time signature. The staff contains a melodic line starting with a quarter note, followed by eighth notes, and ending with a quarter note. A dynamic marking *f* is placed below the first few notes. A bracket above the staff indicates a triplet of three eighth notes.

10

Musical staff 10, first line. Treble clef, common time signature. The staff contains a melodic line starting with a quarter note, followed by eighth notes, and ending with a quarter note.

Musical staff 10, second line. Treble clef, common time signature. The staff contains a melodic line starting with a quarter note, followed by eighth notes, and ending with a quarter note.

Musical staff 11, first line. Treble clef, common time signature. The staff contains a melodic line starting with a quarter note, followed by eighth notes, and ending with a quarter note.

ALTO 1

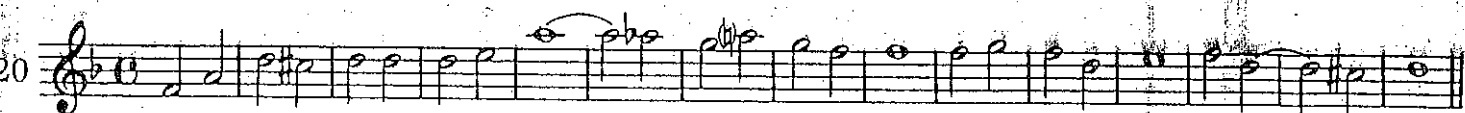
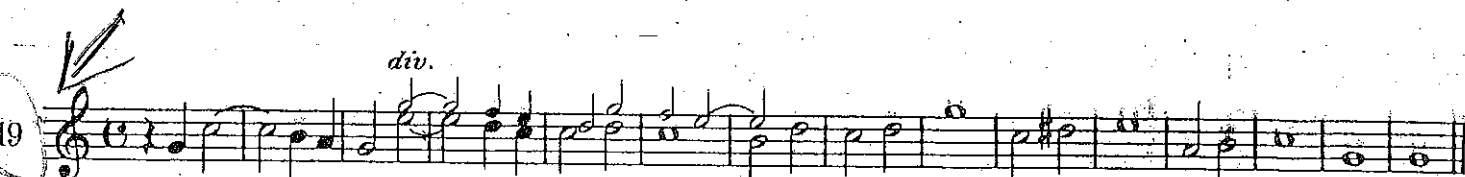
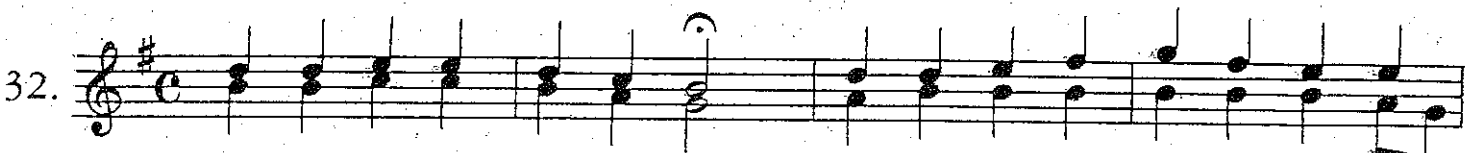
12. Du Lebensfürst, Herr Jesu Christ

Thou Prince of Life, O Christ our Lord

J. S. Bach



Chorale



⑤ 114

⑥ 119

⑦ 124

⑧ 129

⑨ 134

⑩ 139

⑪ 144

⑫ 149

⑬ 154

Richard L. Saucedo

9 159

163