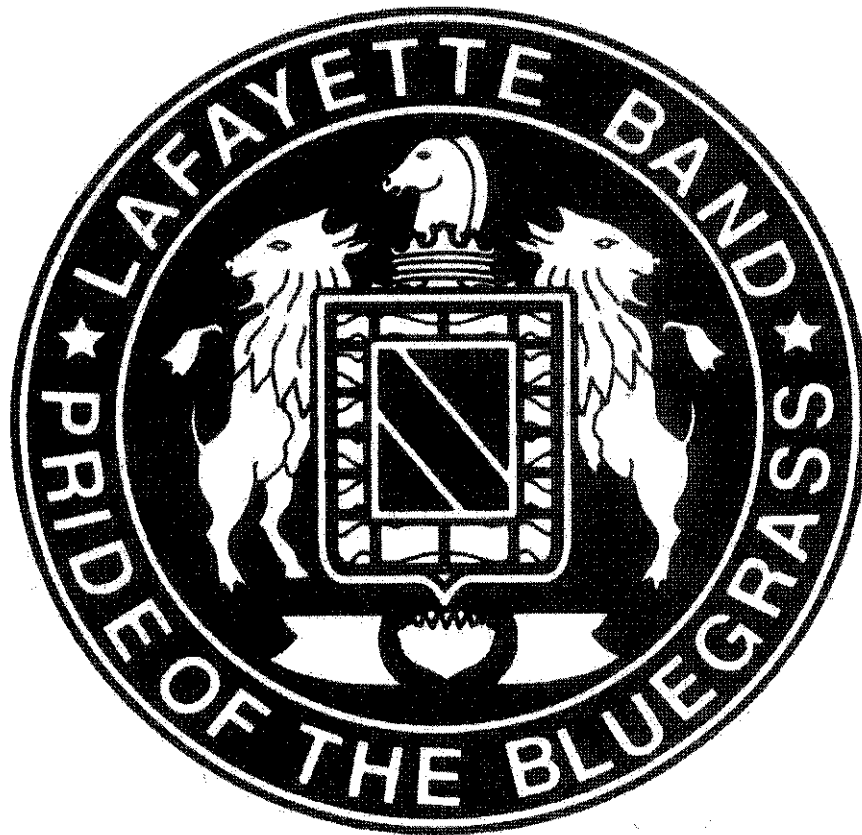


LAFAYETTE

MARCHING BAND

WARM-UP PACKET



TUBA/SOUSA

Look at Top BB^b fingerings Tuba Fingering Chart

Chrom starts here
* here ↓

Notes on gray background are pedal tones.

	A ^b B ^b	B	C	C [#] D ^b	D	D [#] E ^b	E	F
BB ^b Tuba	Open	1 2 3 4 or 2 3 (lip down)	1 2 3 4	1 3 4	2 3 4	1 2 4	2 4 or 1 2 3	4 or 1 3
C Tuba	1	2	Open	1 2 3 4 or 2 3 (lip down)	1 2 3 4	1 3 4	2 3 4	1 2 4

	F [#] G ^b	G	G [#] A ^b	A	A [#] B ^b	B	C	C [#] D ^b
BB ^b Tuba	2 3	1 2	1	2	Open	2 4 or 1 2 3	4 or 1 3	2 3
C Tuba	2 4	4	2 3	1 2	1	2	Open	2 4

	D	D [#] E ^b	E	F	F [#] G ^b	G	G [#] A ^b	A
BB ^b Tuba	1 2	1	2	Open	2 3	1 2	1	2
C Tuba	4	2 3	1 2	1	2	Open	2 3	1 2

	A [#] B ^b	B	C	C [#] D ^b	D	D [#] E ^b	E	F
BB ^b Tuba	Open	1 2	1	2	Open	1	2	Open
C Tuba	1	2	Open	1 2	1	2	Open	1

	F [#] G ^b	G	G [#] A ^b	A	A [#] B ^b	B	C	C [#] D ^b
BB ^b Tuba	2 3	1 2	1	2	Open	1 2	1	2
C Tuba	2	Open	2 3	1 2	1	2	Open	1 2

	D	D [#] E ^b	E	F	F [#] G ^b	G	G [#] A ^b	A	A [#] B ^b
BB ^b Tuba	Open	1	2	Open	2 3	1 2	1	2	Open
C Tuba	1	2	Open	1	2	Open	2 3	1 2	1

Cichowicz Flow Studies

Tuba


1 


2 

3 


4 

5 

6 

7 

8 

9 

Tuba

Lafayette Warm-Ups

Concert F-9 Count Long Tones

8

15

22

Concert B-flat-9 Count Long Tones

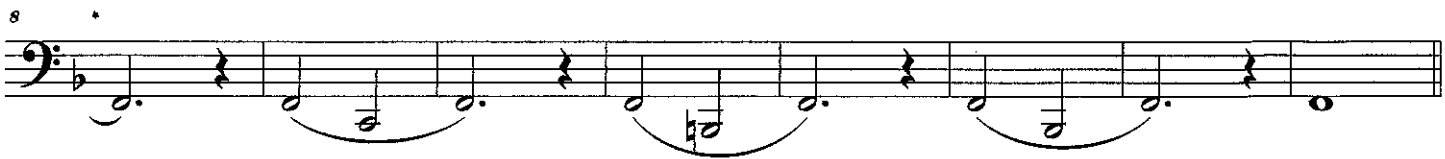
9

16

#1 Old #1

Tuba

8



F Remington (whole note)



10



19



#2 Old #2



8



#6 #6



9



15



Tuba

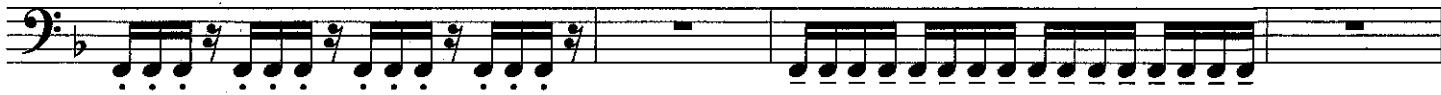
20



25



29



33



8

#8



Goldman Articulation



6



11



16



Tuba

21

A musical staff in bass clef with a key signature of two flats (B-flat and E-flat). It contains a sequence of eighth notes starting on G2 and ascending to G3, followed by a quarter rest.

Level 3 Slurs

A musical staff in bass clef with a key signature of two flats. It features two groups of eighth notes, each under a slur. The first group starts on G2 and ends on G3. The second group starts on G2 and ends on G3, with a quarter rest at the end.

7

A musical staff in bass clef with a key signature of two flats. It features two groups of eighth notes, each under a slur. The first group starts on G2 and ends on G3. The second group starts on G2 and ends on G3, with a quarter rest at the end.

13

A musical staff in bass clef with a key signature of two flats. It features two groups of eighth notes, each under a slur. The first group starts on G2 and ends on G3. The second group starts on G2 and ends on G3, with a quarter rest at the end.

19

repeat in reverse

A musical staff in bass clef with a key signature of two flats. It features a single group of eighth notes under a slur, starting on G3 and descending to G2, representing the reverse of the previous pattern.

Old #9

A musical staff in bass clef with a key signature of two flats. It contains six half notes: G2, A2, B2, C3, B2, A2. The first three notes (G2, A2, B2) are under a slur, and the last three notes (C3, B2, A2) are also under a slur.

#19

A musical staff in bass clef with a key signature of two flats. It contains six half notes: G2, A2, B2, C3, B2, A2.

10

A musical staff in bass clef with a key signature of two flats. It contains six half notes: G2, A2, B2, C3, B2, A2.

ARTICULATION VISUALIZATION

STYLE /
LENGTH

NOTE SYMBOL

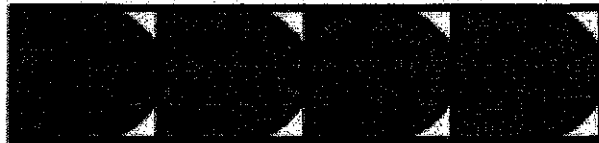
VISUALIZATION

Connected
(Legato)



def. - There is no decay and the notes touch.

Long Lifted
(Legato
Accented)



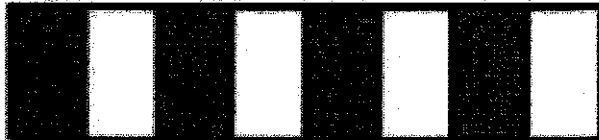
def. - There is a slight decay and the notes touch

Lifted



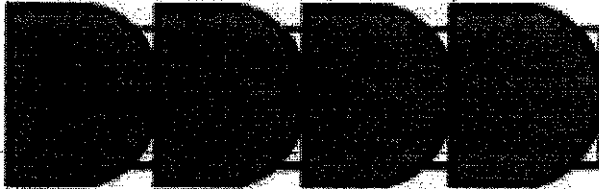
def. - There is a slight decay and a small space

Detached
(Staccato)



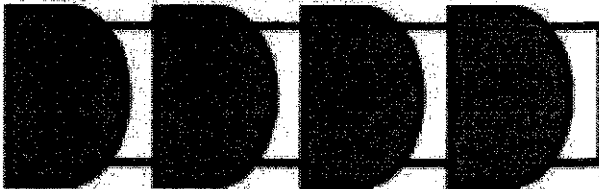
def. - There is no decay and the note length is 1/2 the note it is attached to

Accented



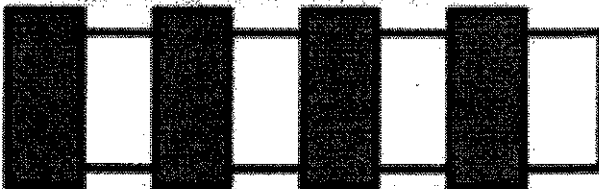
def. - beginning of the note is slightly louder, slight decay and the notes touch

Lifted Accent



def. - beginning of the note is slightly louder, slight decay and a small space

Roof-Top Accent



def. - beginning of the note is slightly louder, no decay and length is 1/2 the note it is attached to

Tuba

Articulation Exercises

①

8

8

②

③

④

27

Tonguing Exercises

Tuba

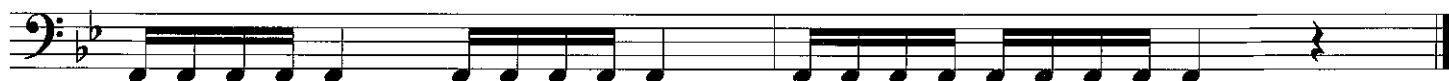
①



②



③



④



⑤



⑥



⑦



⑧



Tuba

Lip Slurs/Chromatic Scales

Version A

Version A consists of four staves of music in 4/4 time, starting with a key signature of one flat (B-flat). The notes are grouped into lip slurs, indicated by curved lines underneath. The first staff contains measures 1 through 5, the second staff contains measures 7 through 11, the third staff contains measures 13 through 17, and the fourth staff contains measures 19 through 21. The scale descends from G2 to B1.

Version B

Version B consists of three staves of music in 4/4 time, starting with a key signature of one flat (B-flat). The notes are grouped into lip slurs, indicated by curved lines underneath. The first staff contains measures 1 through 4, the second staff contains measures 5 through 8, and the third staff contains measures 9 through 11. The scale descends from G2 to B1.

Tuba


I Rec.



Follow Through Exercise

Tuba

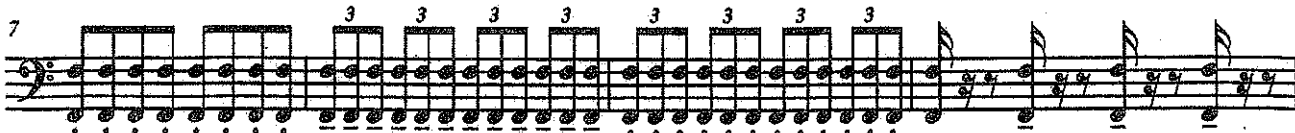


- 1.) Establish sound measure one, count one of each phrase.
- 2.) The first note that changes pitch must have the same energy, sound, tone to initiate movement.
- 3.) Last note of phrase must define cadence and be released in the style (the length of the note and the manner in which the note is articulated) of the music.
- 4.) After movement from the first note is initiated, all notes must have enough energy to move and lead (→) to cadence.
- 5.)  symbol used to remind you to use the same amount of energy on two consecutive notes.

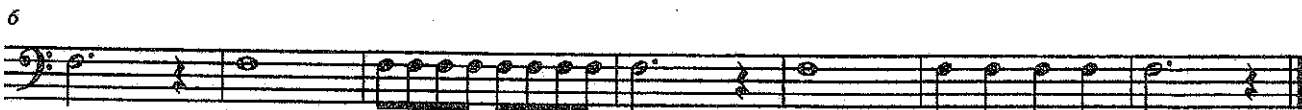
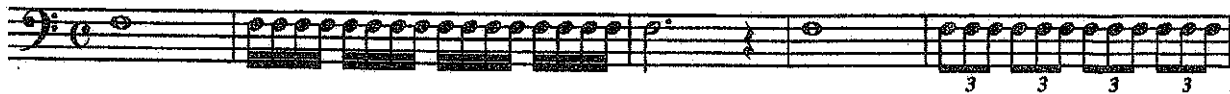
As you try to develop your phrases: technique, dynamics and lyrical ideas - You must maintain integrity of the line. The follow through exercise will be a great tool in your development.

Tuba

6



7



Tuba

8

First staff of music for exercise 8, measures 1-3. The staff is in bass clef with a key signature of two flats (B-flat and E-flat) and a common time signature (C). The music consists of eighth notes with stems pointing up, grouped in pairs. A dynamic marking of *p* (piano) is placed below the first measure.

Second staff of music for exercise 8, measures 4-6. The music continues with eighth notes and stems pointing up. A dynamic marking of *f* (forte) is placed below the fourth measure. A measure rest for three measures is indicated at the beginning of the staff.

9

First staff of music for exercise 9, measures 1-3. The staff is in bass clef with a key signature of two flats and a common time signature. The music consists of eighth notes with stems pointing up, grouped in pairs. A dynamic marking of *p* is placed below the first measure.

Second staff of music for exercise 9, measures 4-6. The music continues with eighth notes and stems pointing up. A dynamic marking of *f* is placed below the fourth measure. A measure rest for three measures is indicated at the beginning of the staff.

10

First staff of music for exercise 10, measures 1-3. The staff is in bass clef with a key signature of two flats and a common time signature. The music consists of eighth notes with stems pointing up, grouped in pairs, and is marked with a slur. A dynamic marking of *p* is placed below the first measure.

Second staff of music for exercise 10, measures 4-6. The music continues with eighth notes and stems pointing up, marked with a slur. A dynamic marking of *p* is placed below the first measure.

Third staff of music for exercise 10, measures 7-12. The music consists of eighth notes with stems pointing up, marked with a slur. A dynamic marking of *p* is placed below the first measure. A measure rest for six measures is indicated at the beginning of the staff.

Du Lebensfurst, Herr Jesu Christ Thou Prince of Life, O Christ our Lord

#19

Tuba

J. S. Bach

T A A T A T T A A T A T A T T A T

Three staves of musical notation in bass clef, 4/4 time signature. The notes are: G2, A2, A2, B2, C3, D3, E3, F3, G3, A3, B3, C4, D4, E4, F4, G4, A4, B4, C5. The notes are grouped into measures by a bar line. Handwritten annotations include dashed lines connecting notes across measures and arrows indicating phrasing.

Chorale

2.

Staff of musical notation in bass clef, 4/4 time signature. The notes are: G2, A2, B2, C3, D3, E3, F3, G3, A3, B3, C4, D4, E4, F4, G4, A4, B4, C5.

Staff of musical notation in bass clef, 4/4 time signature. The notes are: G2, A2, B2, C3, D3, E3, F3, G3, A3, B3, C4, D4, E4, F4, G4, A4, B4, C5.

Staff of musical notation in bass clef, 4/4 time signature. The notes are: G2, A2, B2, C3, D3, E3, F3, G3, A3, B3, C4, D4, E4, F4, G4, A4, B4, C5.

#19 SOLO

Staff of musical notation in treble clef, 4/4 time signature. The notes are: C4, D4, E4, F4, G4, A4, B4, C5.

Staff of musical notation in treble clef, 4/4 time signature. The notes are: C4, D4, E4, F4, G4, A4, B4, C5.

Staff of musical notation in bass clef, 4/4 time signature. The notes are: G2, A2, B2, C3, D3, E3, F3, G3, A3, B3, C4, D4, E4, F4, G4, A4, B4, C5.

Tuba

Lafayette High School Band

Warm-Up

114
E

119
F

124
G

129
H

134
I

139
J

144
K

149
L

154
A

9

159

Richard L. Saucedo

163